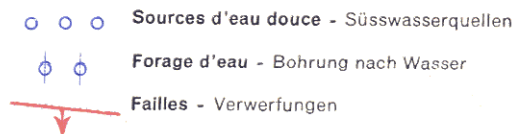
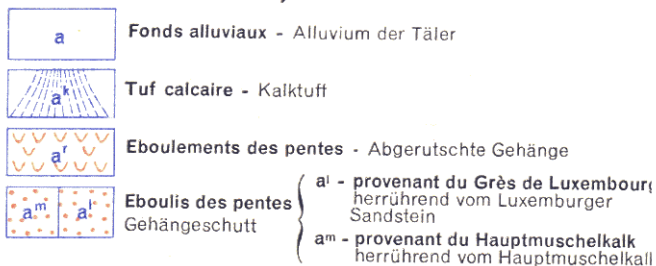


## Légende

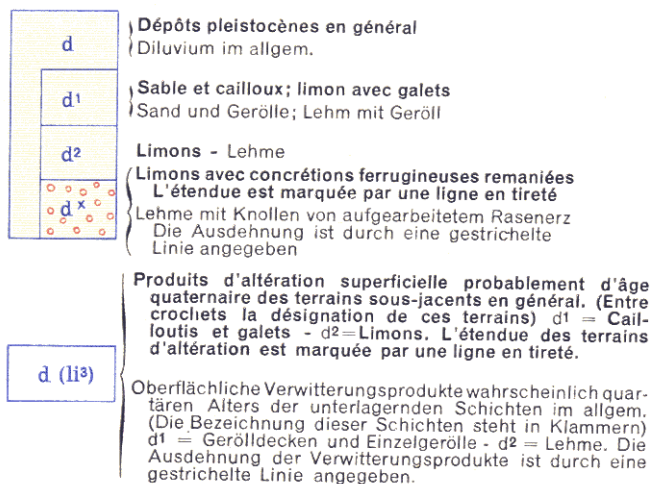


### Quaternaire

#### a) Holocène

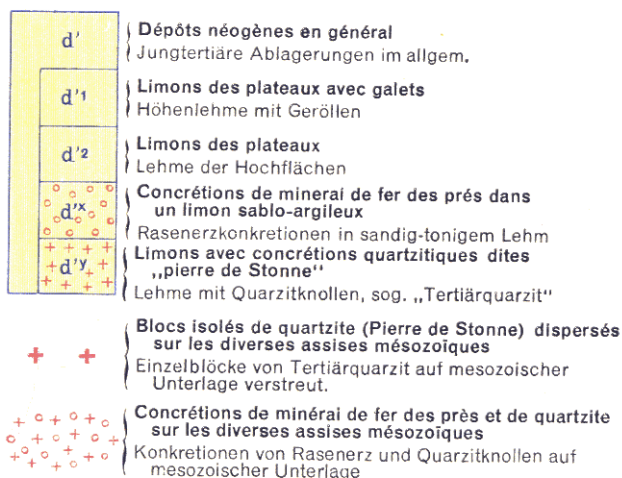


#### b) Pleistocène



### Tertiaire

#### a) Dépôts néogènes Jungtertiäre Ablagerungen



## Système jurassique

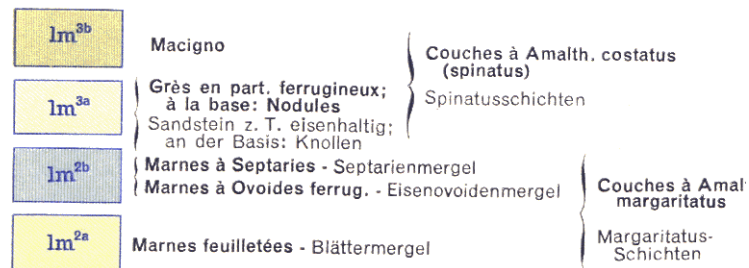
### Lias (I)

#### Toarcien - Oberer Lias (lo)



#### Charmouthien - Mittlerer Lias (lm)

##### 2) Domérien



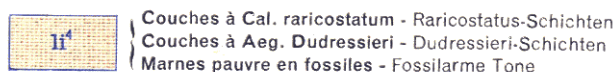
##### 1) Pliensbachien



#### Sinemurien et Hettangien Unterer Lias (li)

##### 2) Sinémurien

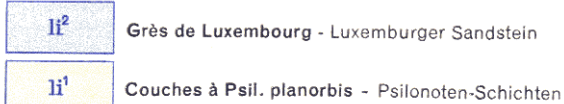
###### a) Lotharingien ou Sinémurien supérieur



##### b) Sinémurien inférieur



##### 1) Hettangien



## Système triasique

### Keuper

